



OYSTERS PARMIGIANA

FREEZER TO PLATE IN 15 MINUTES

**6 FROZEN OVEN READY TASMANIAN PACIFIC OYSTERS
TOPPED WITH TOMATO NAPOLI, MOZZARELLA & BREADCRUMBS
ON AN OVEN PROOF RECYCLABLE TRAY**

PRODUCT CODE: TOC 008

OUTER CARTON: 10 Retail Ready Packs approx. 140g each

INNER DIMENSIONS: (L) 25.5cm x (W) 4.5cm x (H) 21.5cm

OUTER DIMENSIONS: (L) 53cm x (W) 22.5cm x (H) 23.5cm

OUTER WEIGHT: Approx. 5kg

SHELF LIFE: 6 months from frozen date

STORAGE: Keep frozen at -18° or colder.

BARCODES: INNER-9356765000078 OUTER-9356765000191

COUNTRY OF ORIGIN: Australia

INGREDIENTS: Farmed Pacific Oysters (*Crassostrea gigas*), Napoli Sauce (Diced Tomato (62.53%), (Tomato, Tomato Juice, Acidity Regulator), Onion (10.42%), Tomato Paste (Tomato Purée, Salt, Sugar, Onion, Oregano, Basil, Pepper, Citric Acid), Red Peppers (Red Peppers (59%), Water, Vinegar, Salt, Sugar), Red Wine (Preservatives 202, 220), Brown Sugar, Vegetable Oil, Garlic, Salt, Basil, Italian Herbs (Garlic, Tomato, Basil, Oregano, Parsley, Onion, Capsicum, Pepper, Marjoram, Canola Oil)), Cheese (Pasteurised Milk, Salt, Starter Cultures, Rennet, Lipase, Anti-Caking Agent (460)), Gluten Free Breadcrumbs (Rice Flour, Maize Flour, Dextrose (Tapioca, Maize), Salt, Minerals Salts (450, 500)).

CONTAINS: Shellfish **MAY CONTAIN:** Fish, Tree Nuts, Wheat, Milk, Peanuts, Lupin, Soy, Eggs and Sesame since this product is manufactured in a facility that process other food products which may contain these ingredients.

CAUTION: WHILST ALL CARE IS TAKEN WITH SHUCKING OUR OYSTERS, WE CANNOT GUARANTEE SHELL REMNANTS WILL NOT BE PRESENT.

COOKING INSTRUCTIONS: Preheat conventional oven to 210° (200° fan forced). Remove tray from cardboard and plastic packaging and place directly in the oven (white tray is oven-proof).

Bake Oysters Rockefeller for approx. 15 minutes or until the sauce is gently bubbling at the edges, rest in a warm place for 5 minutes and enjoy!

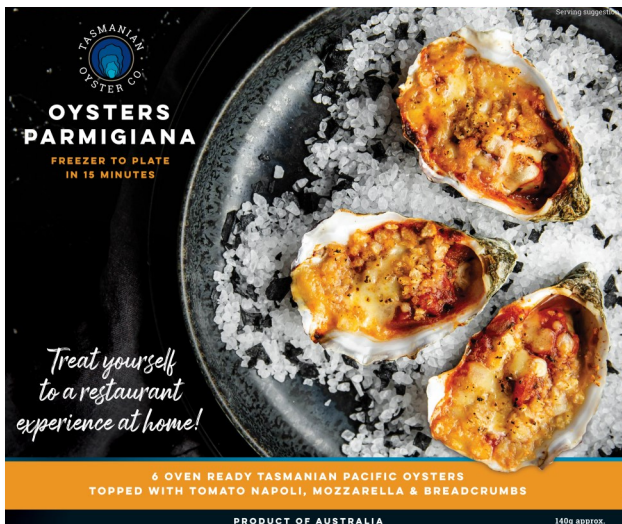
Food will be very hot when cooked. Do not microwave. Cook from frozen. Product must be fully cooked before consuming. Cooking times may vary depending on your appliance.

NUTRITIONAL INFORMATION

SERVING SIZE (l) APPROX 140g	AVERAGE QTY PER SERVING	AVERAGE QTY PER 100g
Energy	940kJ	399kJ
Protein	14.04g	5.5g
Fat, Total	13.14g	4.4g
- Saturated	8.46g	2.2g
Carbohydrate	10.80g	8.4g
- Sugars	4.32g	2.8g
Dietary Fibre	3.9	<1.0g
Sodium	774mg	450mg

PALLET CONFIGURATION

Cartons per layer	10
Number of layers	4
Cartons per pallet	40
Gross pallet height (cm)	120
Gross pallet weight (kg)	239



DISCLAIMER: Tasmanian Oyster Co. endeavours to ensure the information is current. Dated 1/11/21